

4

3

DWG NO. 410-0067

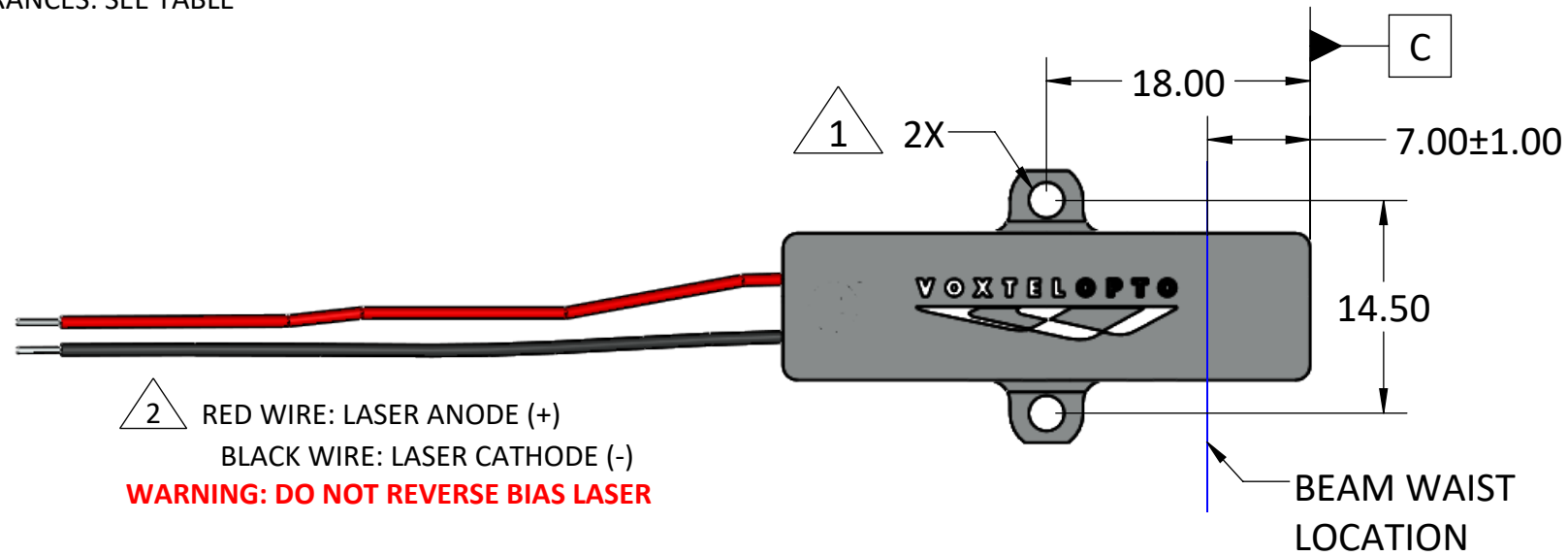
SH 1 REV 02

1

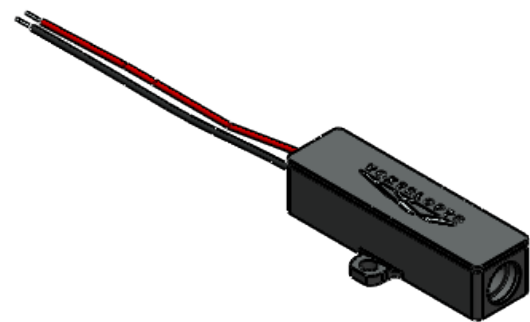
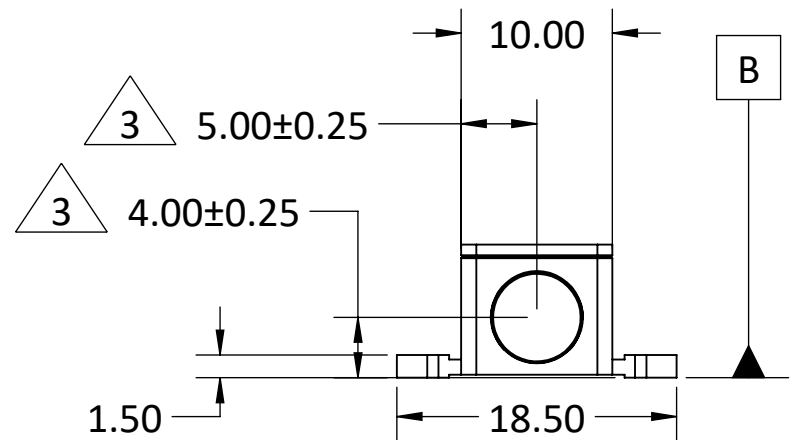
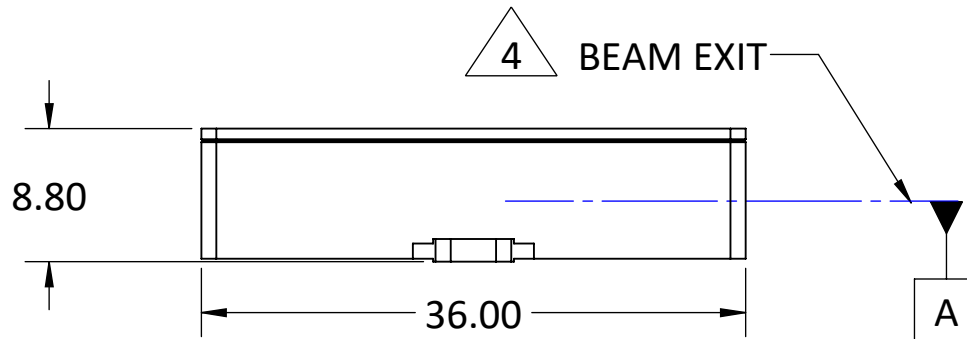
NOTES:

- 1 LASER MOUNTING HOLES: 2X \varnothing 2.40 THRU. TORQUE TO 1.0 in/lbs
- 2 RED WIRE: LASER ANODE (+), BLACK WIRE: LASER CATHODE (-)
WARNING: DO NOT REVERSE BIAS LASER.
- 3 BEAM EXIT TOLERANCE: \pm 0.25mm AS SHOWN
- 4 BEAM POINTING TOLERANCES: SEE TABLE

REV.	DESCRIPTION	DATE	APPROVED	ECO
02	UPDATE TO SUB-ASSEMBLY 410-0082	06/26/20	C.SALDIVAR	0212



2 RED WIRE: LASER ANODE (+)
BLACK WIRE: LASER CATHODE (-)
WARNING: DO NOT REVERSE BIAS LASER



ISO VIEW 1:1

ICD MECHANICAL: 410-0067-02

UNLESS OTHERWISE SPECIFIED

- DIMENSIONS ARE IN MM
- DIMENSIONS APPLY AFTER FINISH
- BREAK ALL SHARP CORNERS MAX. 0.125
- ALL MACHINED SURFACES TO BE 3.2 (RA) OR BETTER

MACHINING TOLERANCES

- 0. \pm 0.75 Angle \pm .5°
- 0.0 \pm 0.25
- 0.00 \pm 0.125
- 0.000 \pm 0.05

DO NOT SCALE DRAWING
3RD ANGLE PROJECTION

PROPRIETARY NOTICE: THE INFORMATION CONTAINED IN THIS DRAWING IS THE SOLE PROPERTY OF VOXTEL INC. IT IS NOT TO BE USED, REPRODUCED, OR DISCLOSED IN WHOLE OR IN PART TO ANYONE WITHOUT THE WRITTEN PERMISSION OF VOXTEL INC.

APPROVALS		DATE
DFT: CS		6/26/20
CHK: CS		6/26/20
APR:		
MATERIAL	FINISH	



TITLE		ICD MECHANICAL: 410-0067		
SIZE B	CAGE NO.	DWG. NO.	ICD-410-0067	REV 02
SCALE = 2 : 1		WT: 8.62 g (0.30oz)	SHEET 1 OF 1	

4 POINTING TOLERANCES (mrad)	
A to B	\pm 10.00 mrad
A to C	\pm 20.00 mrad

4

3

2

1